

IMPACT SUBSEA

INNOVATIVE SENSORS



SONAR



ALTITUDE



DEPTH



AHRS



FMD



CONTROL



MULTIPLEX

ISS360

IMAGING SONARS



The ISS360 range of Imaging Sonars provides 360° field of vision, long range capability with optional pitch & roll.

ISP360

PROFILING SONARS



IS³

The ISP360 Profiling Sonar with IS³ Impact Subsea Signaling Scheme.

A highly compact and power efficient 1° profiling sonar, with up to 80 meters range and a 0.35mm timing resolution.

ISA200 & ISA500

ALTIMETERS



The ISA range of Altimeters provide exceptionally long distance measurements:

- ISA200 Range: 250m+
- ISA500 Range: 120m+

With 1mm accuracy, precision underwater distance measurements can be made.

A multi-echo output is available for multiple range readings from a single ping.

Optionally available is ECHOGRAM, enabling sonar backscatter. Along with an integrated Attitude & Heading Reference System (AHRS). Providing highly stable Heading, Pitch and Roll readings.

ISD4000

DEPTH



The ISD4000 range offers compact, survey grade Depth and Temperature sensors.

Pressure is provided to 0.01% Full Scale Accuracy with temperature provided to 0.1°C.

Optional pressure accuracy of 0.005%FS is available. Optional temperature accuracy of 0.05°C is also available.

Various pressure ratings ensures the highest levels of accuracy can be achieved for any depth of application.

ISM3D

AHRS



The ISM3D is a highly accurate underwater Attitude and Heading Reference System (AHRS).

Providing Heading to $\pm 1^\circ$ of Local Magnetic North with pitch and roll to $\pm 0.07^\circ$ accuracy.

Inertial mode provides a heading output that is fully resistant against temporary or prolonged magnetic interference.

ISFMD

FLOODED MEMBER DETECTION

The ISFMD system provides all that is required to detect flooded members underwater by diver or ROV.



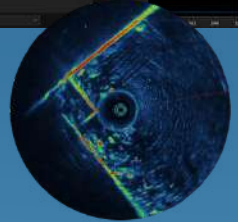
The detection probe holder, cable reel and top box are all provided in a robust aluminium flight case, ready for deployment.

Fully based on acoustics, the ISFMD does not encounter the same issues faced by radioactive based systems.

seaView

SOFTWARE

seaView is an easy to use software package comprised of multiple applications (Apps) for viewing, logging, calibrating and configuring all Impact Subsea Sensors.



seaView allows for multiple sensors to be connected at the same time (pictured). With customisable displays, the free software package provides an adaptable, intuitive user experience.

INTRODUCING OUR NEWEST PRODUCTS

Unity

TOPSIDE CONTROL SYSTEM



Impact Subsea is pleased to announce the launch of Unity Topside Control System and seaMux Subsea Multiplexer, two high-performance solutions designed to streamline sensor integration for subsea vehicles.

The Unity Control System, a 1U high, 19" rack-mountable computer and communications interface that serves as the central hub for subsea sensor suites and their connection to third party survey packages.

seaMux

SUBSEA MULTIPLEXER



seaMux offers versatile connectivity through four communication ports supporting Ethernet, RS232 and RS485, while its scalable design allows for daisy-chaining multiplexers and connecting multiple serial sensors via y-splice cables.

Data is efficiently transmitted to the topside using Ethernet or VDSL over a screened twisted pair. Engineered for reliability, the system is rated for depths up to 6,000 meters, ensuring robust performance in both shallow and deep-water environments.

IMPACT SUBSEA DESIGNS,
MANUFACTURES AND SUPPORTS A RANGE
OF HIGH-PERFORMANCE SENSOR
SOLUTIONS FOR UNDERWATER VEHICLES
AND ASSOCIATED APPLICATIONS.

THE COMPANY'S SENSOR SOLUTIONS ARE
USED WITHIN TRADITIONAL AND
RENEWABLE ENERGY, UNDERWATER
RESEARCH AND DEFENCE SECTORS.



GUH
MEMBER



CONTACT US

Impact Subsea Ltd.
Silverfield House, Aberdeen Energy Park,
Claymore Drive, Bridge of Don,
Aberdeen, AB23 8GD, UK.

E info@impactsubsea.co.uk

T +44 (0) 1224 460 850

www.impactsubsea.com

