

IMPACT SUBSEA

INNOVATIVE SENSORS



SONAR



ALTITUDE



DEPTH



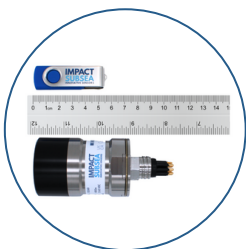
AHRS



FMD

ISS360

IMAGING SONARS



The ISS360 range of Imaging Sonars provides 360° field of vision, long range capability with optional pitch & roll.

ISP360

PROFILING SONARS

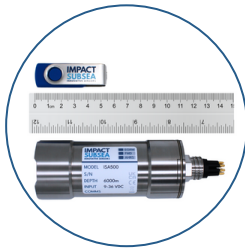


The ISP360 Profiling Sonar with IS³ Impact Subsea Signaling Scheme.

A highly compact and power efficient 1° profiling sonar, with up to 80 meters range and a 0.35mm timing resolution.

ISA500

ALTIMETERS



The ISA500 range of Altimeters & Single Beam Echosounders provide exceptionally long distance measurements - in excess of 120 meters.

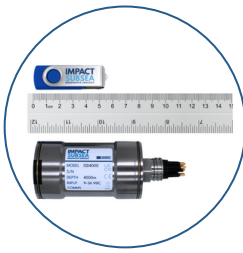
With 1mm accuracy, precision underwater distance measurements can be made.

A multi-echo output is also available for multiple range readings from a single ping.

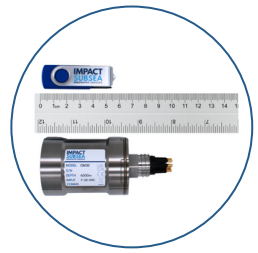


In 2021 the ISA500 gained recognition from the UK's most prestigious award.

ISD4000 DEPTH



ISM3D AHRS



The ISD4000 range offers compact, survey grade Depth and Temperature sensors.

Pressure is provided to 0.01% Full Scale Accuracy with temperature provided to 0.1°C.

Optional pressure accuracy of 0.005%FS is available. Optional temperature accuracy of 0.05°C is also available.

Various pressure ratings ensures the highest levels of accuracy can be achieved for any depth of application.

The ISM3D is a highly accurate underwater Attitude and Heading Reference System (AHRS).

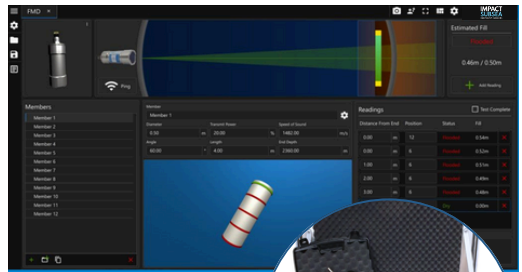
Providing Heading to $\pm 1^\circ$ of Local Magnetic North with pitch and roll to $\pm 0.07^\circ$ accuracy.

Inertial mode provides a heading output that is fully resistant against temporary or prolonged magnetic interference.

ISFMD

FLOODED MEMBER DETECTION

The ISFMD system provides all that is required to detect flooded members underwater by diver or ROV.



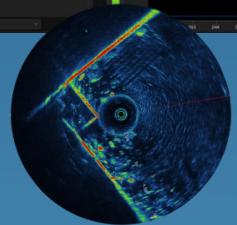
The detection probe holder, cable reel and top box are all provided in a robust aluminium flight case, ready for deployment.

Fully based on acoustics, the ISFMD does not encounter the same issues faced by radioactive based systems.

seaView

SOFTWARE

seaView is an easy to use software package comprised of multiple applications (Apps) for viewing, logging, calibrating and configuring all Impact Subsea Sensors.

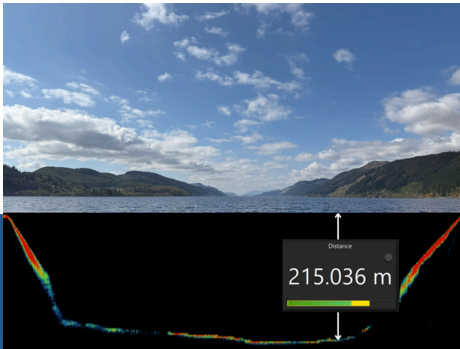


seaView allows for multiple sensors to be connected at the same time (pictured). With customisable displays, the free software package provides an adaptable, intuitive user experience.

INTRODUCING OUR NEWEST PRODUCT

ISA200

ALTIMETER & SINGLE BEAM ECHOSOUNDER



ISA200 Loch Ness Profile



Impact Subsea is pleased to announce the launch of the ISA200, the latest addition to its advanced range of underwater altimeters and single beam echosounders.

Operating at 200kHz, the ISA200 offers an impressive measurement range exceeding 250 meters (820 feet) with exceptional accuracy to within 1mm. Engineered for the most demanding subsea environments, the ISA200 is depth rated to 6,000 meters (19,685 feet) and delivers a precise 15.2° conical beam, providing reliable long-range performance for a wide range of applications.

The ISA200 offers flexible measurement capabilities for AUV, ROV and hydrographic survey operations. When operating as an echosounder, the ISA200 delivers detailed sonar backscatter data, providing up to 2,000 sample points per ping, each with associated energy and correlation values enabling comprehensive seabed analysis.

IMPACT SUBSEA DESIGNS,
MANUFACTURES AND SUPPORTS A RANGE
OF HIGH-PERFORMANCE SENSOR
SOLUTIONS FOR UNDERWATER VEHICLES
AND ASSOCIATED APPLICATIONS.

THE COMPANY'S SENSOR SOLUTIONS ARE
USED WITHIN TRADITIONAL AND
RENEWABLE ENERGY, UNDERWATER
RESEARCH AND DEFENCE SECTORS.



GUH
MEMBER



CONTACT US

Impact Subsea Ltd.
Silverfield House, Aberdeen Energy Park,
Claymore Drive, Bridge of Don,
Aberdeen, AB23 8GD, UK.

E info@impactsubsea.co.uk

T +44 (0) 1224 460 850

www.impactsubsea.com

