

# IMPACT SUBSEA

INNOVATIVE SENSORS



SONAR



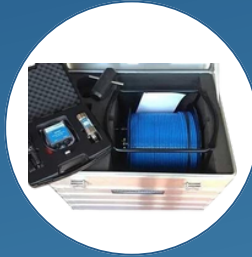
ALTITUDE



DEPTH



AHRS



FMD

## ISS360

### IMAGING SONARS



The ISS360 range of Imaging Sonars provide excellent image clarity with a long range capability.

Utilising an innovative inductive coupling technique, the sonar can provide a full 360° field of vision without the use of slip rings.

CHIRP technology ensures high clarity of imagery.

For increased image quality, the ISS360HD provides a 1° angular resolution and a 100 meter range capability.

## ISA500

### ALTIMETERS



The ISA500 range of Altimeters & Single Beam Echosounders provide exceptionally long distance measurements - in excess of 120 meters.

With 1mm accuracy, precision underwater distance measurements can be made.

A multi-echo output is also available for multiple range readings from a single ping.



In 2021 the ISA500 gained recognition from the UK's most prestigious award.

## ISD4000

### DEPTH



The ISD4000 range offers compact, survey grade Depth and Temperature sensors.

Pressure is provided to 0.01% Full Scale Accuracy with temperature provided to 0.1°C.

Optional pressure accuracy of 0.005%FS is available. Optional temperature accuracy of 0.01°C is also available.

Various pressure ratings ensures the highest levels of accuracy can be achieved for any depth of application.

## ISM3D

### AHRS



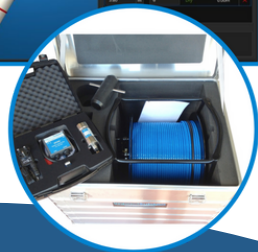
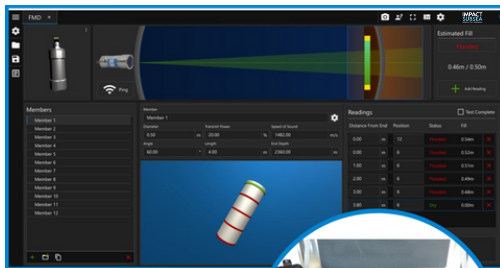
The ISM3D is a highly accurate underwater Attitude and Heading Reference System (AHRS).

Providing Heading to  $\pm 1^\circ$  of Local Magnetic North with pitch and roll to  $\pm 0.07^\circ$  accuracy.

Inertial mode provides a heading output that is fully resistant against temporary or prolonged magnetic interference.

## ISFMD FLOODED MEMBER DETECTION

The ISFMD system provides all that is required to detect flooded members underwater by diver or ROV.

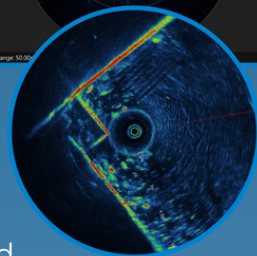
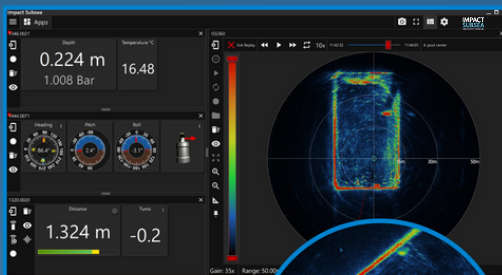


The detection probe holder, cable reel and top box are all provided in a robust aluminium flight case, ready for deployment.

Fully based on acoustics, the ISFMD does not encounter the same issues faced by radioactive based systems.

## seaView SOFTWARE

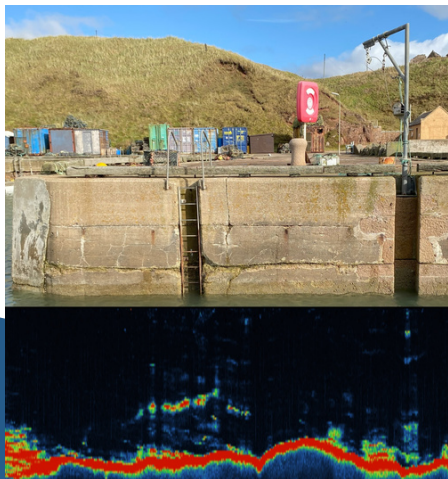
seaView is an easy to use software package comprised of multiple applications (Apps) for viewing, logging, calibrating and configuring all Impact Subsea Sensors.



seaView allows for multiple sensors to be connected at the same time (pictured). With customisable displays, the free software package provides an adaptable, intuitive user experience.

# INTRODUCING ECHOGRAM

FEATURE FOR ISA500



We are thrilled to introduce the addition of a new feature to the ISA500 range of Altimeter & Echosounders – ECHOGRAM.

This new feature adds a full backscatter capability to the ISA500, enabling the underwater Altimeter to be upgraded to have a full single beam imaging sonar capability.

With this new capability, you can now enjoy altitude, attitude, FMD and ECHOGRAM all in one sensor.

What's more, ECHOGRAM can be added to ALL ISA500 Altimeters through a simple firmware and software upgrade, complete with a one-time activation license.

Head over to the seaView page on our website to upgrade your seaView software today.

For firmware upgrades and license purchase, please contact us at [sales@impactsubsea.co.uk](mailto:sales@impactsubsea.co.uk)

IMPACT SUBSEA DESIGNS,  
MANUFACTURES AND SUPPORTS A RANGE  
OF HIGH-PERFORMANCE SENSOR  
SOLUTIONS FOR UNDERWATER VEHICLES  
AND ASSOCIATED APPLICATIONS.

THE COMPANY'S SENSOR SOLUTIONS ARE  
USED WITHIN TRADITIONAL AND  
RENEWABLE ENERGY, UNDERWATER  
RESEARCH AND DEFENCE SECTORS.



---

**GUH**  
MEMBER

---



## CONTACT US

Impact Subsea Ltd.  
Silverfield House, Aberdeen Energy Park,  
Claymore Drive, Bridge of Don,  
Aberdeen, AB23 8GD, UK.

**E** [info@impactsubsea.co.uk](mailto:info@impactsubsea.co.uk)

**T** +44 (0) 1224 460 850

[www.impactsubsea.com](http://www.impactsubsea.com)